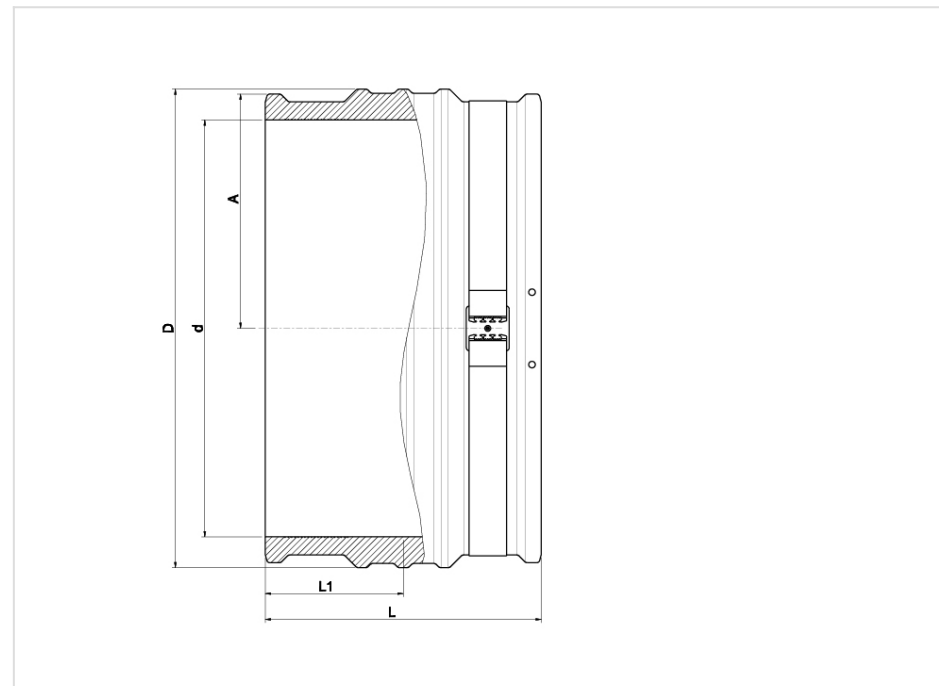


# ОБЛЕГЧЕННАЯ МУФТА SDR17 - 460103

#460103



**Материал корпуса:** PE100

## Family Products

Product Code	d <sub>mm</sub>	A <sub>mm</sub>	D <sub>mm</sub>	L <sub>mm</sub>	L1 <sub>mm</sub>	Номинальное давление газа	Номинальное давление воды	Тип	Подходящие трубы	Вес <sub>g</sub>	Шт в пакете	Единиц в коробке
460103450	450	255	518	310	155	PE100 SDR 17	PN 10	Monofilar, no straps	SDR 11 to SDR 41	11700	1	1
460103450N	450	255	518	310	155	PE100 SDR 17	PN 10	Bifilar, no straps	SDR 11 to SDR 41	11700	1	1
460103500	500	283	576	340	170	PE100 SDR 17	PN 10	Bifilar, no straps	SDR 11 to SDR 33	16000	1	1
460103560N	560	309	625	376	188	PE100 SDR 17	PN 10	Bifilar, with straps	SDR 11 to SDR 41	21510	1	1
460103630N	630	347	706	400	200	PE100 SDR 17	PN 10	Bifilar, with straps	SDR 11 to SDR 33	27000	1	1
460103710N	710	390	797	440	220	PE100 SDR 17	PN 10	Bifilar, with straps	SDR 11 to SDR 33	43100	1	1
460103800N	800	440	897	470	235	PE100 SDR 17	PN 10	Bifilar, with straps	SDR 11 to SDR 41	57300	1	1
460103900N	900	500	1010	500	250	PE100 SDR 17	PN 10	Bifilar, with straps	SDR 11 to SDR 41	68400	1	1
4601031000	1000	555	1128	540	270	PE100 SDR 17	PN 10	Bifilar, with straps	SDR 11 to SDR 41	99260	1	1
4601031200	1200	667	1355	600	300	PE100 SDR 17	PN 10	Bifilar, with straps	SDR 11 to SDR 41	150000	1	1