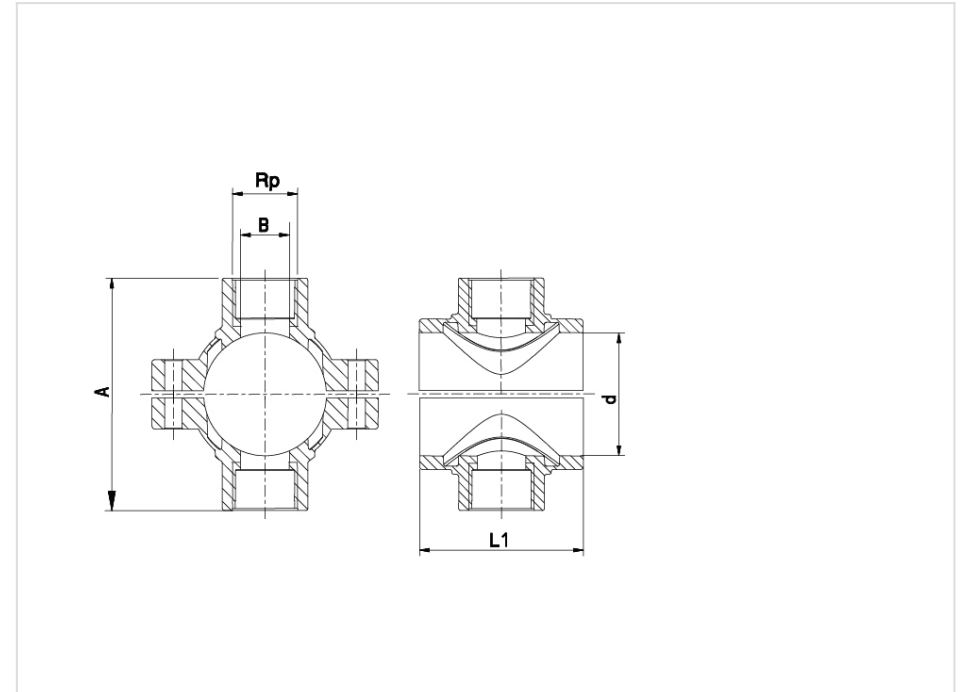


SADDLE DOUBLE OUTLET WITH REINFORCING RING W/ GALVANIZED BOLTS AND NUTS - 161760

#161760



Body Material: Polypropylene, high-grade copolymer.

Seal Material: NBR

Family Products

Product Code	d _{mm}	R _{pinch}	A _{mm}	B _{mm}	H _{mm}	L _{mm}	Pressure Rating Water	Weight _g	Unit Per Bag	Unit Per Carton
161760020005	20	1/2"	66	10	45	70	PN 12.5	73	1	300
161760025005	25	1/2"	71	15	50	75	PN 12.5	81	1	250
161760025007	25	3/4"	73	15	50	75	PN 12.5	86	1	250
161760032005	32	1/2"	80	16	60	92	PN 12.5	144	1	140
161760032007	32	3/4"	82	19	60	92	PN 12.5	148	1	140
161760032010	32	1"	84	20	60	92	PN 12.5	163	1	140
161760040005	40	1/2"	89	16	60	92	PN 12.5	153	1	120
161760040007	40	3/4"	91	19	60	92	PN 12.5	157	1	120
161760040010	40	1"	98	25	60	92	PN 12.5	174	1	120
161760050005	50	1/2"	102	16	73	106	PN 12.5	193	1	80
161760050007	50	3/4"	104	21	73	106	PN 12.5	196	1	80
161760050010	50	1"	109	25	73	106	PN 12.5	210	1	80
161760050013	50	1 1/4"	117	25	73	106	PN 12.5	260	1	80

Product Code	dmm	Rpinch	Amm	Bmm	Hmm	Lmm	Pressure Rating Water	Weightg	Unit Per Bag	Unit Per Carton
161760063005	63	1/2"	116	16	84	116	PN 12.5	293	1	80
161760063007	63	3/4"	118	20	84	116	PN 12.5	296	1	70
161760063010	63	1"	123	25	84	116	PN 12.5	310	1	70
161760063013	63	1 1/4"	132	32	84	116	PN 12.5	354	1	60
161760063015	63	1 1/2"	133	39	84	116	PN 12.5	382	1	60
161760075005	75	1/2"	128	16	98	122	PN 12.5	382	1	60
161760075007	75	3/4"	130	20	98	122	PN 12.5	382	1	60
161760075010	75	1"	135	25	98	122	PN 10	397	1	50
161760075013	75	1 1/4"	144	32	98	122	PN 10	438	1	50
161760075015	75	1 1/2"	145	40	98	122	PN 10	465	1	50
161760075020	75	2"	155	40	98	122	PN 10	513	1	40
161760090005	90	1/2"	143	16	105	141	PN 12.5	467	1	45
161760090007	90	3/4"	146	20	105	141	PN 12.5	468	1	45
161760090010	90	1"	151	25	105	141	PN 10	482	1	45

Product Code	dmm	Rpinch	Amm	Bmm	Hmm	Lmm	Pressure Rating Water	Weightg	Unit Per Bag	Unit Per Carton
161760090013	90	1 1/4"	160	32	105	141	PN 10	526	1	40
161760090015	90	1 1/2"	162	40	105	141	PN 10	546	1	40
161760090020	90	2"	172	50	105	141	PN 10	585	1	36
161760110005	110	1/2"	166	16	116	165	PN 12.5	575	1	40
161760110007	110	3/4"	168	20	116	165	PN 12.5	577	1	40
161760110010	110	1"	173	25	116	165	PN 10	586	1	36
161760110013	110	1 1/4"	182	32	116	165	PN 10	628	1	30
161760110015	110	1 1/2"	187	40	116	165	PN 10	653	1	30
161760110020	110	2"	196	50	116	165	PN 10	685	1	24
161760125007	125	3/4"	182	20	124	184	PN 12.5	814	1	20
161760125010	125	1"	187	25	124	184	PN 10	814	1	20
161760125013	125	1 1/4"	196	32	124	184	PN 10	814	1	20
161760125015	125	1 1/2"	198	40	124	184	PN 10	834	1	20
161760125020	125	2"	208	50	124	184	PN 10	761	1	20

Product Code	dmm	Rpinch	Amm	Bmm	Hmm	Lmm	Pressure Rating Water	Weightg	Unit Per Bag	Unit Per Carton
161760140010	140	1"	202	25	136	201	PN 10	948	1	20
161760140013	140	1 1/4"	212	32	136	201	PN 10	947	1	20
161760140015	140	1 1/2"	213	40	136	201	PN 10	967	1	20
161760140020	140	2"	223	50	136	201	PN 10	1001	1	20
161760160010	160	1"	223	25	145	223	PN 10	1055	1	16
161760160013	160	1 1/4"	233	32	145	223	PN 10	1098	1	16
161760160015	160	1 1/2"	235	40	145	223	PN 10	1119	1	16
161760160020	160	2"	245	50	145	223	PN 10	1137	1	16
161760180010	180	1"	243	25	154	245	PN 10	1310	1	16
161760180013	180	1 1/4"	253	32	154	245	PN 10	1335	1	16
161760180015	180	1 1/2"	255	40	154	245	PN 10	1247	1	16
161760180020	180	2"	265	50	154	245	PN 10	1368	1	16